

- 8" x 14'8" block walls w/ horiz rein 16 oc filled cells 48oc, (2) courses BB w/ (2)#5 cont ea, 1 course BB w/ (2)#4 cont, (1) 2x8 pt, (1) 2x12 pt
 - 8" x 14' block walls w/ horiz rein 16 oc filled cells 48oc, (3) courses BB w/ (2)#5 cont ea, 1 course BB w/ (2)#4 cont, (1) 2x8 pt, (1) 2x12 pt
 - 8" x 12' block walls w/ horiz rein 16 oc filled cells 48oc, (5) courses BB w/ (2)#5 cont ea, 3 course BB w/ (2)#4 cont, (1) 2x8 pt, (1) 2x12 pt
 - 8" x 15'4" block walls w/ horiz rein 16 oc filled cells 48oc, (3) courses BB w/ (2)#5 cont ea, 2 course BB w/ (2)#4 cont, (1) 2x8 pt, (1) 2x12 pt
 - 8" x 16' block walls w/ horiz rein 16 oc filled cells 48oc, (2) courses BB w/ (2)#5 cont ea, 2 course BB w/ (2)#4 cont, (1) 2x8 pt, (1) 2x12 pt
 - 8" x 16'8" block walls w/ horiz rein 16 oc filled cells 48oc, (3) courses BB w/ (2)#5 cont ea, (1) 2x8 pt, (1) 2x12 pt
 - 8" x 4'2" block walls w/ horiz rein 16 oc filled cells 48oc, (3) courses BB w/ (2)#5 cont ea, (1) 2x8 pt, (1) 2x12 pt
 - 8" x 4'10" block walls w/ horiz rein 16 oc filled cells 48oc, (2) courses BB w/ (2)#5 cont ea, (1) 2x8 pt, (1) 2x12 pt
 - 8" x 7'4" block walls w/ horiz rein 16 oc filled cells 48oc, (1) 2x8 pt, (1) 2x12 pt
- Precast lintel w/ (1)#5
- #5 Rebar x 16' Straight Drop Bars
 - #5 Rebar x 18' Straight Drop Bars
 - #5 Rebar x 20' Straight Drop Bars
 - #5 Rebar x 8' Straight Drop Bars

- 80.0 FT
- 72.1 FT
- 14.0 FT
- 22.1 FT
- 28.1 FT
- 14.7 FT
- 21.4 FT
- 24.0 FT
- 13.5 FT
- 13.4 FT
- 23.0 EA
- 27.0 EA
- 12.0 EA
- 21.0 EA

MARK	SEE WALL	FIN	REINFORCEMENT	HEIGHT
2TB-1	(1) 8" E.O. COURSE	CONCRETE	(2) #5 IN EA COURSE	10.8 x 11.2
2TB-2	(1) 8" E.O. COURSE	CONCRETE	(2) #5 IN EA COURSE	11.2 x 11.8
2TB-3	(1) 8" E.O. COURSE	CONCRETE	(2) #5 IN EA COURSE	11.8 x 12.4
2TB-4	(1) 8" E.O. COURSE	CONCRETE	(2) #5 IN EA COURSE	12.4 x 13.0
2TB-5	(1) 8" E.O. COURSE	CONCRETE	(2) #5 IN EA COURSE	13.0 x 13.6
2TB-6	(1) 8" E.O. COURSE	CONCRETE	(2) #5 IN EA COURSE	13.6 x 14.2
2TB-7	(1) 8" E.O. COURSE	CONCRETE	(2) #5 IN EA COURSE	14.2 x 14.8
1-1	PRE-CAST GIRD	11" HSS	8.0 x 8.0 x 10.0	
1-2	PRE-CAST GIRD	11" HSS	8.0 x 8.0 x 10.0	

ROOF NOTES:

1. SEE S100 FOR GENERAL STRUCTURAL NOTES
2. 30K10 OPEN WEB STEEL BAR JOISTS @ 5'-0" O.C. MAX.
3. LOW PITCH ROOF DECK SHALL CONSIST OF 1 1/2" x 20GA. TYPE "B" STEEL DECK. FASTEN DECK TO SUPPORTS w/ 5/8" PUDDLE WELDS @ 36/4 w/ #10 TEK SCREWS @ 12" O.C. SIDE LAP FASTENERS
4. [REINFORCING SYMBOL] DENOTES REINF. 8" MASONRY WALL WITH REINFORCING IN GROUT FILLED CELLS AT 40" OR AS SHOWN. f'm = 2500 PSI GROUT TYPE M OR S
5. [VERTICAL BAR SYMBOL] DENOTES #5 VERTICAL REINFORCING BAR IN GROUT FILLED CELL. SEE GENERAL NOTES FOR ADDITIONAL INFORMATION.
6. [STEEL BEAM SYMBOL] DENOTES 12"x6"x1/2" HSS STEEL BEAM OVER STOREFRONT. PROVIDE 7"x16"x3/4" BEARING PLATE AT EACH END EMBEDDED INTO MASONRY GROUTED REINFORCED CELLS WITH (4) 5/8"x8" J-BOLTS
7. SPECIALTY ENGINEER/CONTRACTOR SHALL REFER TO MECH. ENGINEER DETAILS FOR WEIGHTS AND SUPPORTS OF HVAC UNITS.



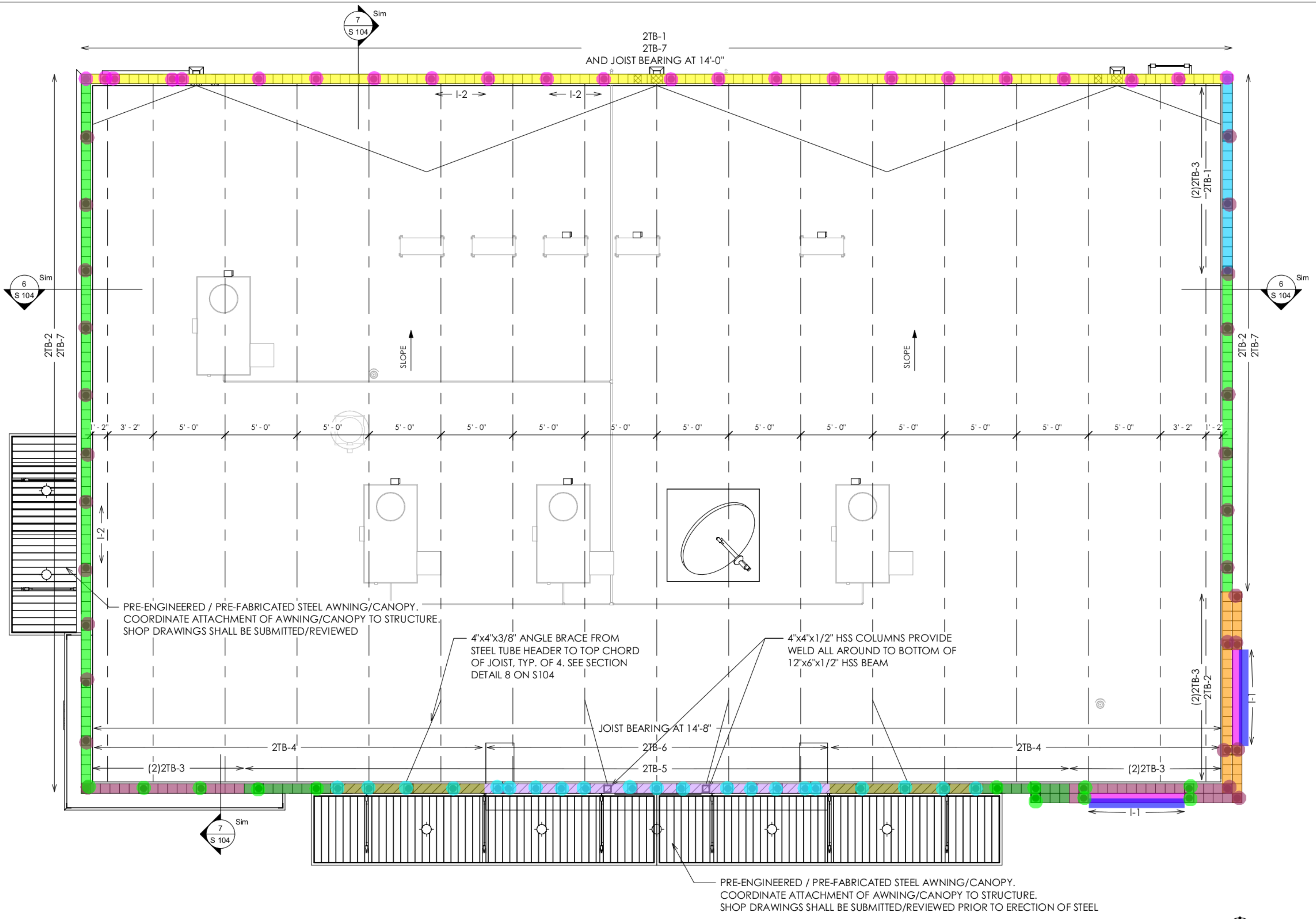
Architecture Planning
Interiors Advising
RGA-DESIGN, LLC

600 S Magnolia Ave, Suite 375, Tampa, FL 33606
Phone 813-228-2220 Fax 813-259-0003
FLORIDA REGISTRATION: AA 00035203
THE ARCHITECTURAL DRAWINGS IS CIVIL ENGINEERING. NO USE OF ENGINEERING SHALL BE MADE WITHOUT THE SIGNATURE OF THE ARCHITECT. ALL COPYRIGHT/LAW RIGHTS OF COPYRIGHT AND/OR OTHERS ARE HEREBY SPECIFICALLY RESERVED. © RGA GROUP, LLC

CLIENT
PROGRESS REAL ESTATE LLC

SHEET TITLE
ROOF PLAN

CIRCLE K CONVENIENCE STORE
NORTHEAST CORNER OF PROGRESS BLVD. & SOUTH FALKENBURG ROAD, RIVERVIEW, FLORIDA



1 ROOF PLAN
1/4" = 1'-0"

NO.	BY	DATE	DESCRIPTION
REVISIONS			

PERMIT SET

E. WILLIAM HENRY
AR0007521

PROJECT NUMBER: 216-03
ISSUE DATE: 10.24.2016
DRAWN BY: AP
SHEET NUMBER

S 103